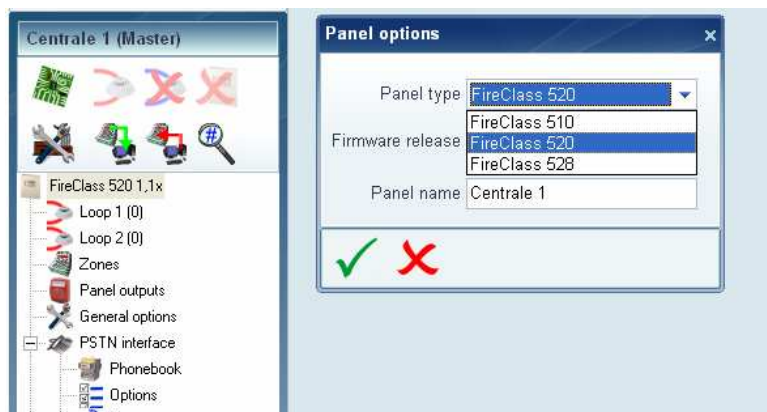


FC510,FC520: Instruction to upgrade the Panel's FW to version 2.00

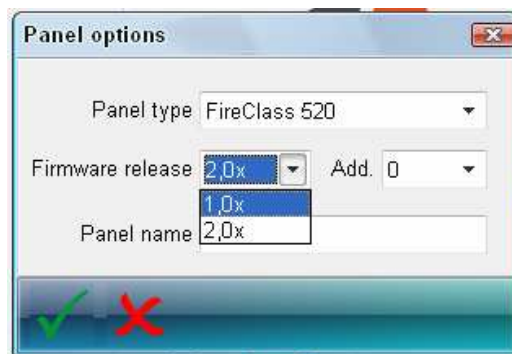
1. Start the "FC500Console" SW ver. 1.02.000 or newer on the PC
2. Connect the PC serial port to the panel main card (DB9 connector)
3. Power-up the panel and wait that the quiescent state has been reached ("WAIT" or "SCANNING LOOPS")
4. In the "FireClass Console" SW select the panel type acting on the first icon on the left in the "Panel 1" section



5. Select the right type of the panel in the “panel options” pop-up



6. select the “Firmware release” to 1.0x in the “panel options” pop-up in order to adapt the new SW to the previous panel’s FW version.

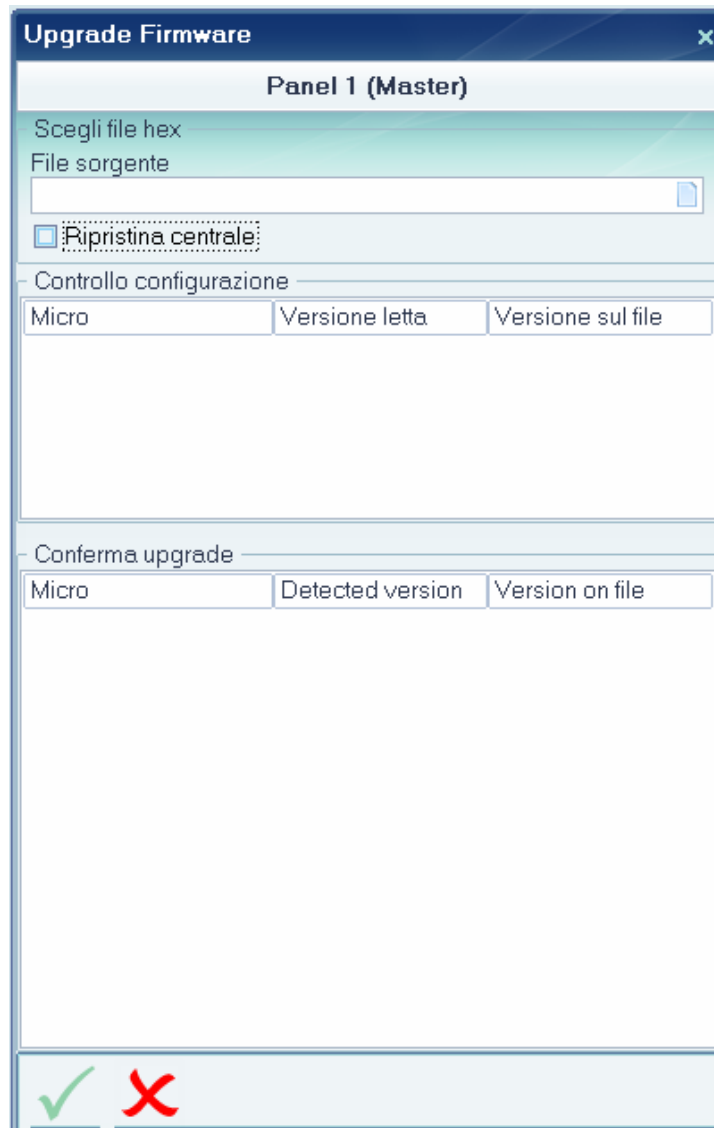


7. And then validate these information by clicking on the  icon.

8. In the “FireClass Console” SW select the “Firmware Upgrade” function.
[Communication] → [Firmware Upgrade]



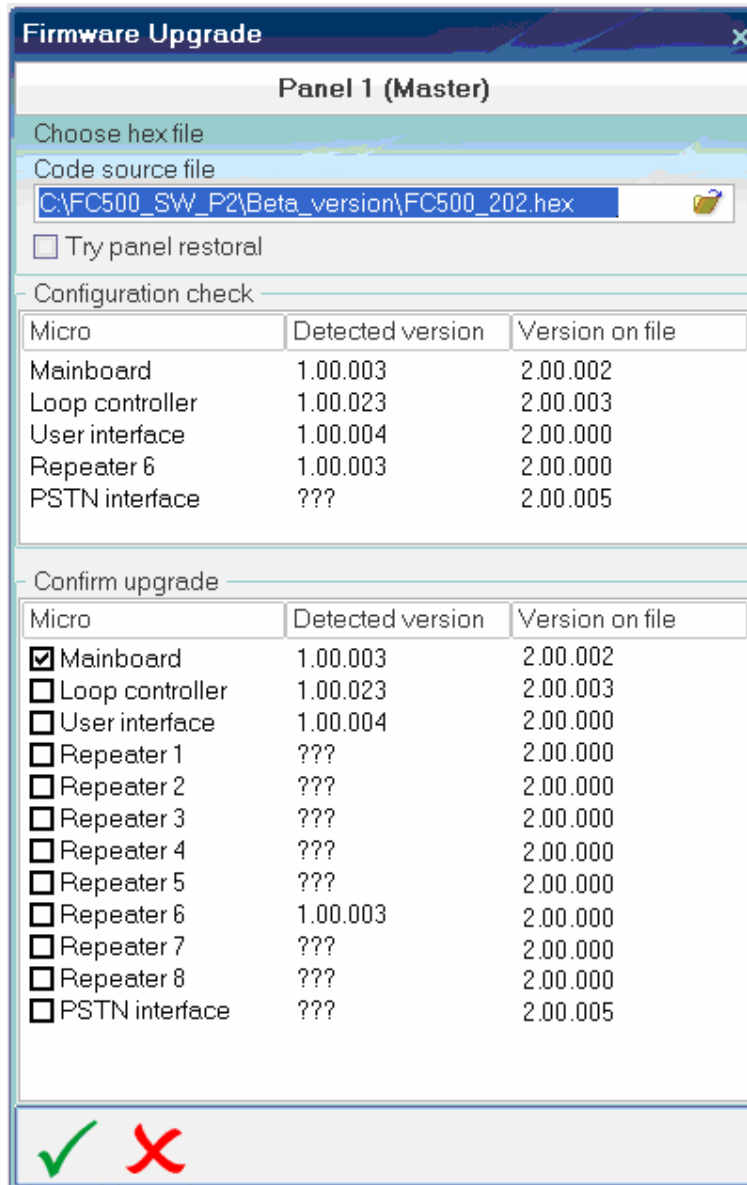
“Upgrade Firmware” window




9. Acting on the “folder” icon on the right side of the row that contains the name of the source file, a navigation window will be opened to select the source file.

The source file is **FC500_202.hex**

10. In the area “Confirm Upgrade” remove all the “✓” present, except for that related to the Mainboard entry, in order to upgrade only the main controller as the first one.



11. Start the FW download of the main controller acting on the  icon.

12. Wait the end of the FW download process.

Note: While the new Firmware is being downloaded from PC to the Main Controller, an User Interface lost of communication fault arises.

Don't worry about this fault, it signals that the User Interface cannot exchanges data with the Main Controller because it is upgrading its Firmware

13. Close the "Upgrade Firmware" window

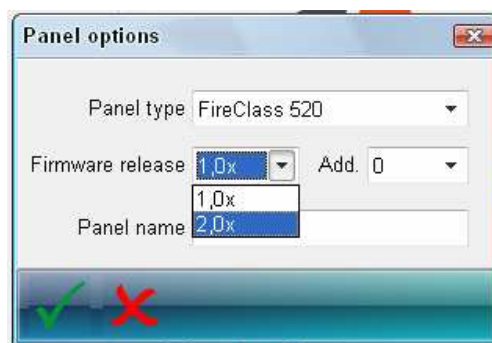
14. Wait that the quiescent state ("WAIT" or "SCANNING LOOPS") has been reached by the panel

NOTE: in the case one or more repeaters are present in the system, after the maincard FW upgrade, a repeater communication fault is generated because they are sensed as obsolete and their FW have to be upgraded.

15. In the "FireClass Console" SW select the panel type acting on the first icon on the left in the "Panel 1" section

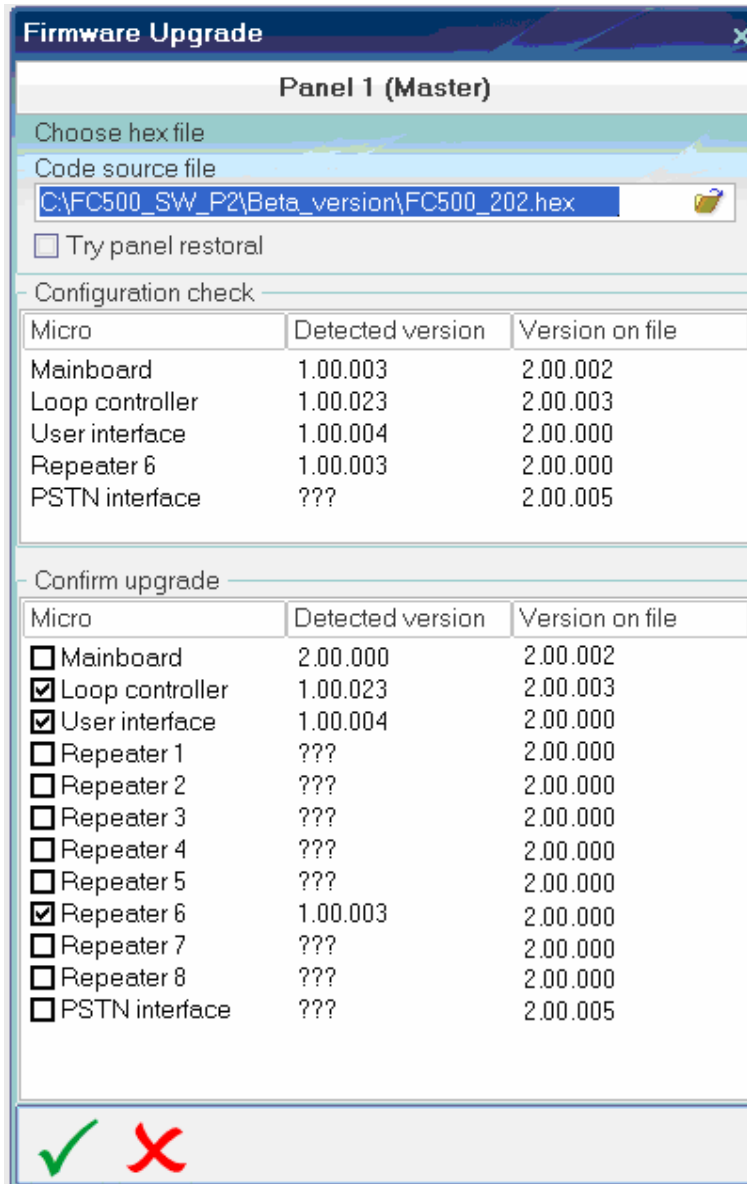



16. Modify the "Firmware release" to 2.0x



17. And then validate this information by clicking on the  icon.

18. Repeat again the procedure starting from point 4 (the source file will be the same), Verify that in the “Confirm Upgrade” area the selection “✓” for the “Loop controller”, “User Interface” and all the repeaters present in the system are active.



19. Start the FW download of the main controller acting on the  icon.

20. Wait the end of the FW download process.

Verify that the “FireClass Console” SW doesn’t show error messages (like “Cannot enter in bridge mode”), if there were errors repeat the procedure

At the end of the FW upgrade process, the panel will align the strings in the User Interface and repeaters, during this phase the string “ strings update please wait” will appear.

To verify the correctness of the FW downloaded in the panel, select on the panel’s User Interface “F2=ANALYZE”, then select the option 9 [FW ver.] and the following information have to be displayed

VERSIONI FIRMWARE		
MAIN CONTROLLER	ver 02.00	sv02
LOOP CONTROLLER	ver 02.00	sv03
USER INTERFACE	ver 02.00	sv00